

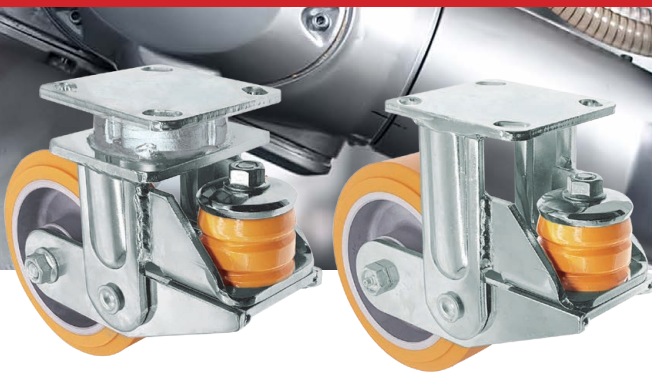


43 SERIES

Kingpinless Spring-Loaded Casters / Capacity up to 2000 lbs.

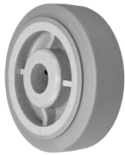


Spring into Safety Impact Protection



The 43 Series can effectively absorb shock and protect cargo. The poly spring resists corrosion and elastic fatigue. Recommended for the automotive industry, computer equipment or any other shock sensitive load.

Wheel Types



PPR DURATEK
High Tech Rubber Wheel



PPREC DURATEK
Conductive Wheel



PTU DURATOUGH
Polyurethane on Polyolefin Wheel



DTU DURATOUGH
Polyurethane on Polyolefin Wheel



DUA SIRIUS
Polyurethane on Aluminum Wheel



TUA SIRIUS
Polyurethane on Aluminum Wheel



TUA-EX SIRIUS
Polyurethane on Aluminum Wheel



TUA-DW SIRIUS
Polyurethane on Aluminum Dual Wheel



ESD SIRIUS
Electrostatic Dissipative Wheel



DUSA ALNITEK
High Resilience Polyurethane on Aluminum Wheel



TUSA ALNITEK
High Resilience Polyurethane on Aluminum Wheel



DUSG ALNITEK
High Resilience Polyurethane on Glass-filled Nylon Wheel



HU
Heavy Duty Solid Polyurethane Wheel

Features

- Hot forged ASTM 1045 steel
- Double welded legs and integrally forged raceway
- Kingpinless design eliminates problems associated with kingpin failure due to severe shock loading
- Protects cargo from damaging vibration
- Quiet operation and perfect low rolling resistance
- Unique solid polyurethane spring resists corrosion and elastic fatigue
- Reduced repair and maintenance costs

Caster Types



CS
Swivel Caster



CR
Rigid Caster



FS
Swivel Caster with Face Contact Brake

Top Plate Caster

Top Plate Caster

**Plate	Size	Bolt Pattern	Bolt Dia.
03	4 x 4-1/2	2-5/8 x 3-5/8 to 3 x 3	3/8
04	4-1/2 x 6-1/4	2-7/16 x 4-15/16 to 3-3/8 x 5-1/4	1/2

Bearing Options

Bearing Options

Part #	Bearing
23	3/4 I.D. Roller
38Q	1/2 I.D. Q34 Precision Ball
56	1/2 I.D. Delrin
57	3/4 I.D. Delrin
63	6203 Precision Ball
64	6204 Precision Ball

Wheel Dia.	Tread Width	Wheel Type	+Color	Load Cap.	OAH	Radius	Swivel Part #	^Bearing Options
6	2	Yoke Only	-	2000	-	-	43CS620-**-	-
		DURATEK Flat High Tech Rubber	A, X	600	7-1/2	4-9/16	43CS620PPR^+**-	23, 38Q, 56, 57
		DURATEK High Tech Conductive	H	600	7-1/2	4-9/16	43CS620PPR^+**-EC	23, 38Q, 56, 57
		DURATOUGH Flat Polyurethane on Polyolefin	A, G, J, K, U	1000	7-1/2	4-9/16	43CS620PTU^+**-	23, 38Q, 56, 57
		DURATOUGH Donut Polyurethane on Polyolefin	J, K, U	1000	7-1/2	4-9/16	43CS620DTU^+**-	23, 38Q, 56, 57
		ALNITEK High Resilience Polyurethane on Aluminum	L, R, X	1200	7-1/2	4-9/16	43CS620DUSA^+**-	63
		ALNITEK High Resilience Polyurethane on Glass-filled Nylon	L, R, X	1200	7-1/2	4-9/16	43CS620DUSG^+**-	23, 38Q, 56, 57
		ALNITEK Flat High Resilience Polyurethane on Aluminum	L	1300	7-1/2	4-9/16	43CS620TUSA^+**-EX	63
		SIRIUS Flat Heavy Duty Polyurethane on Aluminum	M	1400	7-1/2	4-9/16	43CS620TUA^+**-	63
		SIRIUS Flat Ultra Heavy Duty Polyurethane on Aluminum	M	1500	7-1/2	4-9/16	43CS620TUA^+**-EX	63
		SIRIUS Donut Heavy Duty Polyurethane on Aluminum	M	1500	7-1/2	4-9/16	43CS620DUA^+**-	63
		SIRIUS Heavy Duty Polyurethane on Aluminum Dual	M	1500	7-1/2	4-9/16	43CS620TUA^+**-DW	63
		SIRIUS Heavy Duty Electrostatic Dissipative	E	1500	7-1/2	4-9/16	43CS620DUA^+**-ESD	63
		SIRIUS Heavy Duty Solid Polyurethane on Glass-filled Nylon	X	1800	7-1/2	4-9/16	43CS620HU^+**-	23, 38Q, 56, 57, 63
8	2	Yoke Only	-	2000	-	-	43CS820-**-	-
		DURATEK Flat High Tech Rubber	A, X	675	9-1/2	6-1/8	43CS820PPR^+**-	23, 38Q, 56, 57
		DURATEK High Tech Conductive	H	675	9-1/2	6-1/8	43CS820PPR^+**-EC	23, 38Q, 56, 57
		DURATOUGH Flat Polyurethane on Polyolefin	A, G, J, K, U	1200	9-1/2	6-1/8	43CS820PTU^+**-	23, 38Q, 56, 57
		DURATOUGH Donut Polyurethane on Polyolefin	J, K, U	1200	9-1/2	6-1/8	43CS820DTU^+**-	23, 38Q, 56, 57
		ALNITEK High Resilience Polyurethane on Aluminum	L, R, X	1500	9-1/2	6-1/8	43CS820DUSA^+**-	63, 64
		ALNITEK High Resilience Polyurethane on Glass-filled Nylon	L, R, X	1500	9-1/2	6-1/8	43CS820DUSG^+**-	23, 38Q, 56, 57
		ALNITEK Flat High Resilience Polyurethane on Aluminum	L	1600	9-1/2	6-1/8	43CS820TUSA^+**-EX-W	64
		SIRIUS Flat Heavy Duty Polyurethane on Aluminum	M	1900	9-1/2	6-1/8	43CS820TUA^+**-	63
		SIRIUS Flat Ultra Heavy Duty Polyurethane on Aluminum	M	2000	9-1/2	6-1/8	43CS820TUA^+**-EX	64
		SIRIUS Donut Heavy Duty Polyurethane on Aluminum	M	2000	9-1/2	6-1/8	43CS820DUA^+**-	63, 64
		SIRIUS Heavy Duty Polyurethane on Aluminum Dual	M	2000	9-1/2	6-1/8	43CS820TUA^+**-DW	63
		SIRIUS Heavy Duty Electrostatic Dissipative	E	2000	9-1/2	6-1/8	43CS820DUA^+**-ESD	63
		SIRIUS Heavy Duty Solid Polyurethane on Glass-filled Nylon	X	2000	9-1/2	6-1/8	43CS820HU^+**-	23, 38Q, 56, 57, 63