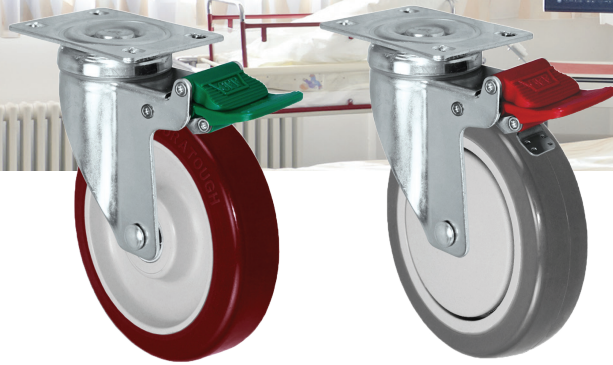


25 Series

400 lbs
180 kg
 C
 1/4
 4
 5



Elegance Meets Professional Mobility



The 25 Series has directional and total lock brake options, including a chrome brake pedal for maximum maneuverability.

Features

- Double ball bearing raceways
- Heavy gauge cold rolled steel
- Integrated dual pedal brake
- Safe, quiet and non-marking
- Plastic grease seal on swivel raceway
- Chrome plated option available

Light-Medium Duty Caster

Load Capacity
400 lbs
180 kg

Industries and Applications

Medical
 Laboratory
 Office
 Electronics



Size	Bolt Pattern	Attaching Bolt Dia.	**Plate
2-3/8 x 3-5/8	1-3/4 x 2-7/8 to 3	5/16	01

Size	Stem Type	**Stem
1/2-13 x 1	Threaded Stem	41
1/2-13 x 1-1/2	Threaded Stem	43
1/2-13 x 2-9/16	Threaded Stem	47

Caster Type	Lock #
Swivel	CS
Swivel/Total Lock	TL
Swivel/Directional Lock	DL

Option	Prefix
Chrome Plated	C
With Chrome Brake	M

Bearing Options	^Part #
Annular	11
Precision Full Thread Guard	34
Precision Small Thread Guard	35
1/2 Delrin	56
1/2 Plain Bore with Bushing	83

Special Order

Wheel Dia.	Tread Width	Wheel Type	Load Cap.	OAH	Radius	Swivel Part #	Bearing Options
4	1-1/4	FX Thermoplastic Rubber	300	5-1/2	3-1/2	25 CS 414FX^**	11, 56
4	1-1/4	Duratek High Tech Rubber	300	5-1/2	3-1/2	25 CS 414PPR^**	11, 56
4	1-1/4	Polyurethane Polyolefin	300	5-1/2	3-1/2	25 CS 414PPU^**	34, 35
4	1-1/4	Duratough Polyurethane Polyolefin	325	5-1/2	3-1/2	25 CS 414PTU^**	11, 56
4	1-1/4	Solid Polyurethane	400	5-1/2	3-1/2	25 CS 414SPU^**	83
5	1-1/4	FX Thermoplastic Rubber	315	6-1/2	4	25 CS 514FX^**	11, 56
5	1-1/4	Duratek High Tech Rubber	325	6-1/2	4	25 CS 514PPR^**	11, 56
5	1-1/4	Polyurethane Polyolefin	325	6-1/2	4	25 CS 514PPU^**	34, 35
5	1-1/4	Duratough Polyurethane Polyolefin	350	6-1/2	4	25 CS 514PTU^**	11, 56
5	1-1/4	Solid Polyurethane	400	6-1/2	4	25 CS 514SPU^**	83