

Brakes



Total Lock & Directional Lock Brake Kits

Includes Axle & Nut



Wheel Dia.	Series	Total Lock #	Directional Lock #
4	34	TTL420 Kit	DL420 Kit
5	34	TTL520 Kit	DL520 Kit
6	34	TTL620 Kit	DL620 Kit
8	34	TTL820 Kit	DL820 Kit

Side Lock Brakes



Wheel Dia.	**Series	Part #
3, 4, 5	06	SLB-06
2, 3	10	SLB-10
2.5	10	SLB-25

Cam Lock Brake Kits

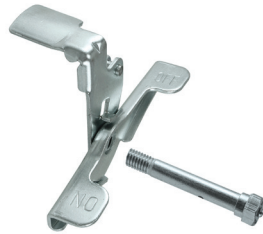
Includes Axle & Nut



Wheel Dia.	Wheel Width	Series	Part #
4, 5, 6, 8	2	30, 40, 46	CMB30 Kit

Top Lock Brake Kits

Includes Axle & Nut



Wheel Dia.	Wheel Width	Series	Part #
3	1-1/4	21, 22, 24	TLB314 Kit
3-1/2	1-1/4	21, 22, 24	TLB3514 Kit
4	1-1/4	21, 22, 24	TLB414 Kit
4	2	30, 34, 35, 40, 46	TLB420 Kit
5	1-1/4	21, 22, 24	TLB514 Kit
5	2	30, 34, 35, 40, 46	TLB520 Kit
6	1-1/4	24	TLB614 Kit
6	2	30, 34, 35, 40, 46	TLB620 Kit
8	2	30, 34, 35, 40, 46	TLB820 Kit

Posi-Lock Brakes

Features

- Stainless steel construction with nylon brake pedal
- For 21, 24 & S24 Series casters



Wheel Dia.	Wheel Width	Series	Part #
3	1-1/4	21, 24	HS314
3-1/2	1-1/4	21, 24	HS3514
4	1-1/4	21, 24	HS414
5	1-1/4	21, 24	HS514
6	1-1/4	24	HS614

Stainless Steel Top Lock Brakes

Includes Axle & Nut

Wheel Dia.	Wheel Width	Series	Part #
4	2	S30	STLB420-30 Kit
5	2	S30	STLB520-30 Kit
6	2	S30	STLB620-30 Kit
8	2	S30	STLB820-30 Kit

4 Position Swivel Lock

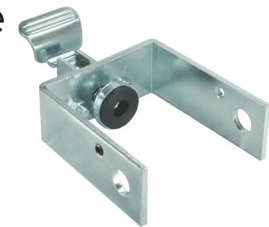


Top Plate #	Top Plate Size	Series	Part #
03	4 x 4-1/2	30, 34, 40	PSL-03
03	4 x 4-1/2	Stainless 30	PSL-S03
04	4-1/2 x 6-1/4	35, 40, 60, 91	PSL-04
06	5-1/4 x 7-1/4	90, 92	PSL-06

Face Contact Brake

Features

- Side set screws lock arms to fork legs
- Adjustable foot brake
- Includes axle and nut



Wheel Dia.	Wheel Width	Series	Part #
6	3	60, 90, 91, 92	FB630 KIT
8	3	60, 90, 91, 92	FB830 KIT
10	3	60, 90, 91, 92	FB1030 KIT
12	3	60, 90, 91, 92	FB1230 KIT