



# **M**aterial Handling



# INDUSTRIAL ROLLING CART

Durastar Manufacturing



- Two shelves included



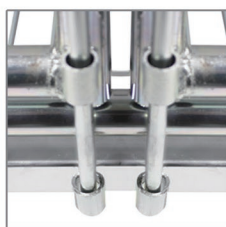
- Secure locking mechanism



- Double locks to secure top



- Two rigid and two swivel 5" x 2" casters



- Base inserts for extra security

## EVRC-8

The Security Cart has double door fronts. Designed to enable the user to secure and display products safely, quickly and easily.

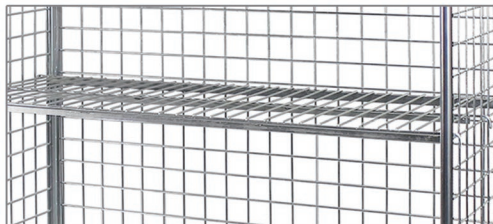
- ▶ Production Protection
- ▶ Visual Inventory
- ▶ Ease of Movement
- ▶ Easily and Completely Disassembled
- ▶ Tamper Resistant Design
- ▶ 4 to 1 Return Ratio

Overall Dimensions	▶ 48" x 24" x 70"
Inside Dimensions	46" x 22-1/2" x 63-1/2"
Shipping Weight	▶ 185 lbs.
Capacity	1800 lbs.
Side Mesh	▶ 2-1/4" x 2-1/4"
Base Mesh	1" x 4"
Shelf Capacity	▶ 225 lbs.
Options	Caster Brakes
Plating	▶ Electro-Zinc



# INDUSTRIAL ROLLING CART

**Durastar Manufacturing**



- Shelf can be placed at any cross wire



- Two rigid and two swivel 5" x 2" casters

## EVRC-11

The Rolling Cart was designed for display and picking operation.

- ▶ 24" Depth for Narrow Aisle Application
- ▶ Ease of Movement
- ▶ Production Protection
- ▶ Easily and Completely Disassembled
- ▶ 4 to 1 Return Ratio

Overall Dimensions	▶ 48" x 24" x 70"
Inside Dimensions	46" x 22-1/2" x 63-1/2"
Shipping Weight	▶ 110 lbs.
Capacity	1800 lbs.
Side Mesh	▶ 2" x 4"
Base Mesh	1" x 4"
Shelf Capacity	▶ 225 lbs.
Options	3 Sided, Caster Brakes
Plating	▶ Electro-Zinc



# OPEN FOOT CONTAINER

Durastar Manufacturing



● Available with or without casters



● 1/2" wire feet and base reinforcing wire for easy cleaning and stacking

## 15102EV 15102EV - WC

The Wire Container is versatile in its construction and design. The 33" depth allows for easy reach to the back of the container. It is available with or without casters which are 5" x 2" Polyurethane, 2 Rigid and 2 Swivel. These containers can be stacked four high with product and up to 30 high when collapsed for storage with a collapsed height of 12".

\* WC: Casters included. (add 1/2" to OAH)

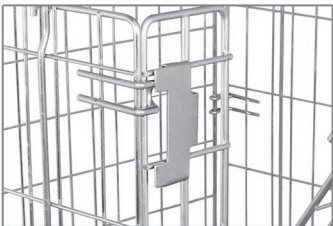
Weight	▶ 110 lbs.   130 lbs. WC
Capacity	2200 lbs.
Overall Dimensions	▶ 44-1/2" x 33" x 39"
Inside Dimensions	42" x 31-1/2" x 33-1/2"
Front Gate	▶ 1/2 drop front gate on the 44-1/2" side
Side Mesh	▶ 2-1/4" x 2-1/4"
Base Mesh	1-1/4" x 4"
Plating	▶ Electro-Zinc
Accessories	Casters Caster Brakes



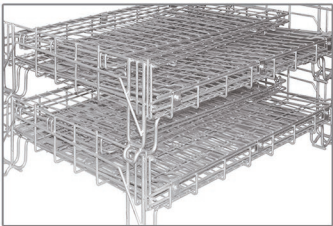


# OPEN FOOT CONTAINER

Durastar Manufacturing



• Automatic latches



• Stacked collapsed

## 15403EV 15403EV - WC

The 15403 wire container has the most desired features needed in a container today. This unit will also nest with other manufacturers' containers. It is available with or without casters which are 5" x 2" Polyurethane, 2 Rigid and 2 Swivel. These containers can be stacked four high with product and up to 30 high when collapsed for storage with a collapsed height of 12-1/2"

\* WC: Casters included. (add 1/2" to OAH)

Weight	▶ 115 lbs.   135 lbs. WC
Capacity	2200 lbs.
Overall Dimensions	▶ 48" x 40" x 38"
Inside Dimensions	45-1/2" x 38-1/4" x 31-1/2"
Front Gate	▶ 1/2 drop front gate on the 48" side
Side Mesh	▶ 2-1/2" x 4-1/2"
Base Mesh	1" x 6"
Plating	▶ Electro-Zinc
Accessories	Casters Caster Brakes



# OPEN FOOT CONTAINER

Durastar Manufacturing



• Containers are electro-zinc plated



• Caster pads are welded to the bottom of base for casters

## 15404EV 15404EV - WC

The Wire Container is very versatile and is extremely strong and durable. This container will cube a standard size trailer (two high, two wide). It is available with or without casters which are 5" x 2" Polyurethane, 2 Rigid and 2 Swivel. These containers can be stacked four high with product and up to 30 high when collapses for storage with a total collapsed height of 12-1/2".

\* WC: Casters included. (add 1/2" to OAH)

Weight	▶ 120 lbs.   140 lbs. WC
Capacity	4000 lbs.
Overall Dimensions	▶ 48" x 40" x 45-1/2"
Inside Dimensions	45-1/2" x 38-1/4" x 39"
Front Gate	▶ 1/2 drop front gate on the 48" side
Side Mesh	▶ 2-1/2" x 4-1/2"
Base Mesh	1" x 6"
Plating	▶ Electro-Zinc
Accessories	Casters Caster Brakes

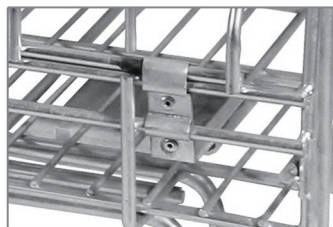


# OPEN FOOT CONTAINER

Durastar Manufacturing



• Open foot container



• Solid steel H-D hinges

## 15406EV 15406EV - WC

The 15406 wire container eliminates the need for forklifts and other handling equipment and allows for ease of movement in nearly every application. It is available with or without casters which are 5" x 2" Polyurethane, 2 Rigid and 2 Swivel. These containers can be stacked four high with product and up to 30 high when collapsed for storage with a collapsed height of 12-1/2".

\* WC: Casters included. (add 1/2" to OAH)

Weight	▶ 145 lbs.   165 lbs. WC
Capacity	1800 lbs.
Overall Dimensions	▶ 72" x 40" x 46"
Inside Dimensions	70" x 37-1/2" x 39-1/2"
Front Gate	▶ Two 1/2 drop front gate on both of the 72" sides
Side Mesh	▶ 2-1/2" x 4-1/2"
Base Mesh	1" x 6"
Plating	▶ Electro-Zinc
Accessories	Casters Caster Brakes





# OPEN FOOT CONTAINER

Durastar Manufacturing



• Available with or without casters



• Stacked set up

## 15739EV

## 15739EV - WC

The 15739 Wire Container is perfect for end cap displays, merchandising and picking operations where space is at a premium. It is available with or without casters which are 4" x 1.25" Polyolefin, 2 Rigid and 2 Swivel. These containers can be stacked four high with product and up to 30 high when collapsed for storage with a collapsed height of 9".

\* WC: Casters included. (add 1/2" to OAH)

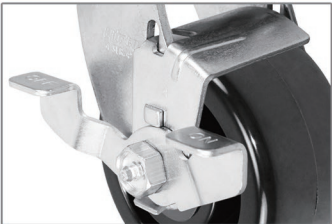
Weight	▶ 55 lbs.   65 lbs. WC
Capacity	800 lbs.
Overall Dimensions	▶ 33-3/4" x 24" x 26-1/4"
Inside Dimensions	31-1/4" x 22" x 21-1/4"
Front Gate	▶ 1/2 drop front gate on the 33-3/4" side
Side Mesh	▶ 2-1/2" x 3-1/2"
Base Mesh	1" x 4"
Plating	▶ Electro-Zinc
Accessories	Casters Caster Brakes





# CLOSED FOOT CONTAINER

Durastar Manufacturing



• Available with or without caster brakes



• Closed foot container

## 324028EV 324028EV - WC

The side and base mesh is 2" x 2". The gate is a 1/2 drop front gate with only four latch bolts to engage for quick and easy assembly. The 324028 wire container has four way entry for forklifts or pallet jacks, with a clearance of 4". Can be stacked up to four high fully loaded. The casters are 4" x 2", 2 Rigid and 2 Swivel.

Weight	▶ 115 lbs.   133 lbs. WC
Capacity	4000 lbs.   3200 lbs. WC
Overall Dimensions	▶ 32" x 40" x 34-1/2"
Inside Dimensions	30" x 38" x 28"
Plating	▶ Electro-Zinc
Accessories	Casters
	Caster Brakes

\* WC: Casters included. (add 1/2" to OAH)



# CLOSED FOOT CONTAINER

Durastar Manufacturing



- Caster pads are welded to the bottom of base for casters



- Available with 4" x 2" casters

## 404824EV 404824EV - WC

The side and base mesh is 2" x 2". The gate is a 1/2 drop front gate with only four latch bolts to engage for quick and easy assembly. The 404828 wire container has four way entry for forklifts or pallet jacks, with a clearance of 4". Can be stacked up to four high fully loaded. Heavy-duty base design for long life cycles. The casters are 4" x 2", 2 Rigid and 2 Swivel.

Weight	▶ 139 lbs.   157 lbs. WC
Capacity	4000 lbs.   2800 lbs. WC
Overall Dimensions	▶ 48" x 40" x 30-1/2"
Inside Dimensions	46" x 38" x 24"
Plating	▶ Electro-Zinc
Accessories	Casters
	Caster Brakes

\* WC: Casters included. (add 1/2" to OAH)

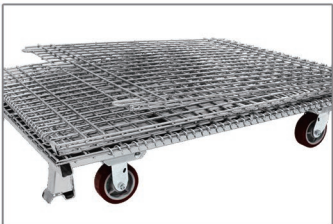


# CLOSED FOOT CONTAINER

Durastar Manufacturing



• Available with or without casters



• Collapsed with casters

## 404836S4EV 404836S4EV - WC

The container has 2" x 2" base and side mesh for visual inventory when assembled. Half drop gate on the 48" side. 4" clearance for either forklifts or pallet jacks for ease of movement. Fully collapsible and stackable. Can be stacked 4 high with product. Casters and casters with brakes are available. This container comes with caster pads for easy installation or removal of the container.

Weight	▶ 166 lbs.   184 lbs. WC
Capacity	4000 lbs.   3200 lbs. WC
Overall Dimensions	▶ 40" x 48" x 42-1/2"
Inside Dimensions	38" x 46" x 36"
Plating	▶ Electro-Zinc
Accessories	Casters
	Caster Brakes

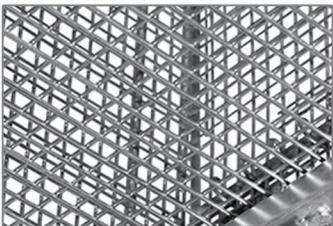
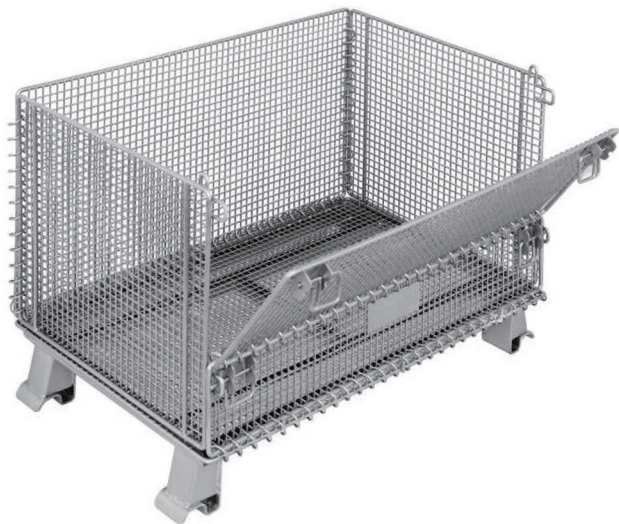
\* WC: Casters included. (add 1/2" to OAH)



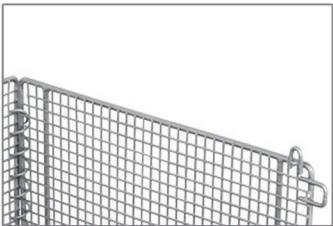


# CLOSED FOOT CONTAINER

Durastar Manufacturing



• Ideal for holding small items security



• No sharp edges

## JR5EV JR5EV - WC

This container offer a clean method of storage that allows for quick visual inventory inspection. It has a gate locking mechanism to avoid unintended opening and the channel base understructure is added for the needed strength. They can be stacked 3 high when fully loaded to save space. The smaller mesh pattern is ideal for holding small items security and the side mesh and bottom mesh is 1/2" x 1/2". Sold with caster pads and has 1/2" drop-full drop down gate.

\* **WC:** Casters included. (add 1/2" to OAH)

Weight	▶ 55 lbs.   65 lbs. WC
Capacity	1100 lbs.
Overall Dimensions	▶ 20" x 32" x 21-1/2"
Inside Dimensions	18" x 30" x 16"
Plating	▶ Electro-Zinc
Accessories	Casters
	Caster Brakes





# 3-IN-1 CONVERTIBLE HAND TRUCK

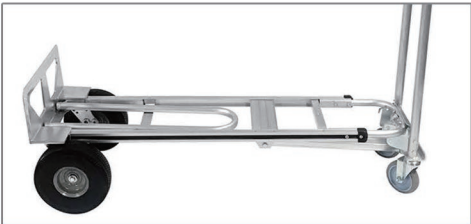
Durastar Manufacturing



• Folding nose extended



• Forty-five degree incline



• Four wheel platform truck

## AC3-FF

This Hand Truck converts easily from hand truck to 45° incline truck or platform truck. The aluminum construction is light weight, strong and durable. The folding nose extension can create extra surface area for carrying bulky cargo and fold up easily when not in use.

- ▶ 8" x 28" Folding Nose Extension
- ▶ Two 10" x 3.5" PU Foam **Flat Free Wheels**
- ▶ Two 5" x 1.25" **Formula XS Rubber Casters**
- ▶ **2 Year Limited Warranty**

Height	▶ 52"
Platform Deck	12" x 50"
Nose Plate	▶ 7.5" x 18"
Weight	46.8 lbs.
Capacity	▶ 500 lbs. Hand Truck/45° 750 lbs. Platform Truck
Wheel Type	▶ Flat-Free Wheel



# 2-IN-1 CONVERTIBLE HAND TRUCK

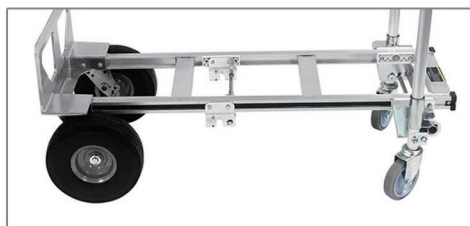
Durastar Manufacturing



• Hand truck position



• Black dual handle



• Four wheel platform truck

## ACJ51-FF

The Hand Truck converts easily from hand truck to platform truck. Large aluminum nose plate can accept huge loads. The hand truck maneuvers smoothly on 10 x 3.5" flat-free wheels and 5 x 1.25" Formula XS thermoplastic rubber casters.

- ▶ Black Dual Handle
- ▶ Two 10" x 3.5" PU Foam **Flat Free Wheels**
- ▶ Two 5" x 1.25" **Formula XS Rubber Casters**
- ▶ **2 Year Limited Warranty**

Height	▶ 51"
Platform Deck	12" x 43"
Nose Plate	▶ 7.5" x 18"
Weight	41.5 lbs.
Capacity	▶ 500 lbs. Hand Truck
	800 lbs. Platform Truck
Wheel Type	▶ Flat-Free Wheel



# 2-IN-1 CONVERTIBLE HAND TRUCK

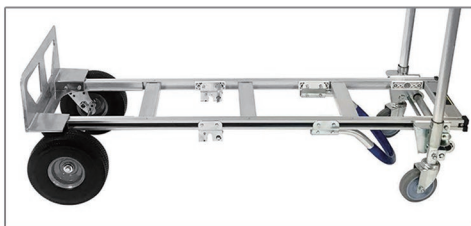
Durastar Manufacturing



• Hand truck position



• Anti-slip curved handle



• Four wheel platform truck

## ACS61-FF

The Hand Truck converts instantly from hand truck to platform truck. The aluminum construction is lightweight, high strength and durable. Large aluminum nose plate can accept heavy loads easily. Anti-slip curved handle provides safety and comfort.

- ▶ Anti-Slip Curved Handle
- ▶ Two 10" x 3.5" PU Foam **Flat Free Wheels**
- ▶ Two 5" x 1.25" **Formula XS Rubber Casters**
- ▶ **2 Year Limited Warranty**

Height	▶ 61"
Platform Deck	12" x 56"
Nose Plate	▶ 7.5" x 18"
Weight	45.2 lbs.
Capacity	▶ 500 lbs. Hand Truck
	800 lbs. Platform Truck
Wheel Type	▶ Flat-Free Wheel

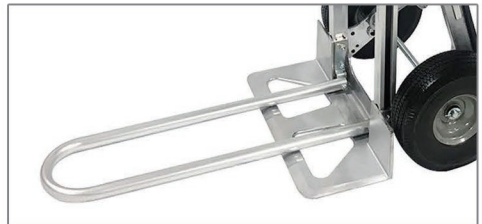


# STANDARD HAND TRUCK

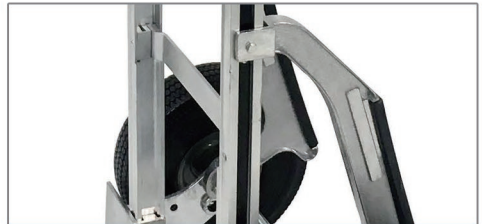
Durastar Manufacturing



• Hand truck position



• Folding nose extended



• Four wheel platform truck

## AD52E-FF-C

This Hand Truck has large nose plate which can accept heavy loads easily. The folding nose extension can create extra surface area for carrying bulky cargo. Stair climbers transport heavy loads up and down stairs or curbs easily.

- ▶ Black Dual Handle
- ▶ With **Stair Climbers**
- ▶ With 8 x 28" Folding Nose Extension
- ▶ Two 10 x 3.5" PU Foam **Flat Free Wheels**
- ▶ **2 Year Limited Warranty**

Height	▶ 52.5"
Nose Plate	7.5" x 18"
Weight	▶ 26.5 lbs.
Capacity	500 lbs.
Wheel Type	▶ Flat-Free Wheel
Warranty	2 Year Limited Warranty





# STANDARD HAND TRUCK

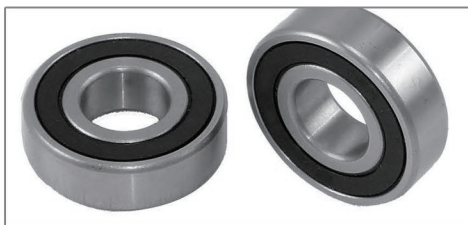
Durastar Manufacturing



• Anti-slip curved handle



• Two crowned tread flat free wheels



• With heavy duty precision ball bearings

## AH52-FT

This hand truck has anti-slip curved handle that provides safety and steers easily with one hand. Unique 4 rail frames for reinforcement and durability. The hand truck maneuvers smoothly on 10" x 3" crowned tread flat-free Wheels with heavy duty precision bearings.

- ▶ Anti-Slip Curved Handle
- ▶ **4 Rail Frames** for reinforcement and durability
- ▶ Two 10 x 3" Crowned Tread Flat Free Wheels with **Heavy Duty Precision Ball Bearings**
- ▶ **2 Year Limited Warranty**

Height	▶ 52"
Nose Plate	7.5" x 18"
Weight	▶ 17.7 lbs.
Capacity	500 lbs.
Wheel Type	▶ Flat-Free Wheel
Warranty	2 Year Limited Warranty



# STANDARD HAND TRUCK

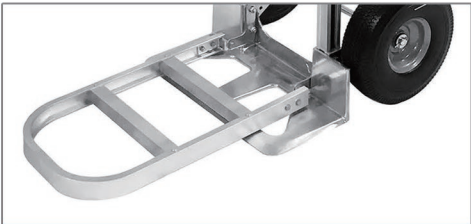
Durastar Manufacturing



• Hand truck position



• Loop curved handle



• Folding nose extended

## AP52E-FF

The aluminum construction is lightweight and high strength. This hand truck can be maneuvered easily with the loop handle. The 12" x 20" folding nose extension can create extra surface area for carrying bulky cargo. The hand truck steers smoothly on 10" x 3.5" flat-free Wheels.

- ▶ Loop Curved Handle
- ▶ 12" x 20" Folding Nose Extension
- ▶ Two 10 x 3" PU Foam Flat Free Wheels
- ▶ 2 Year Limited Warranty

Height	▶ 52"
Nose Plate	7.5" x 18"
Weight	▶ 24.3 lbs.
Capacity	500 lbs.
Wheel Type	▶ Flat-Free Wheel
Warranty	2 Year Limited Warranty



# STANDARD HAND TRUCK

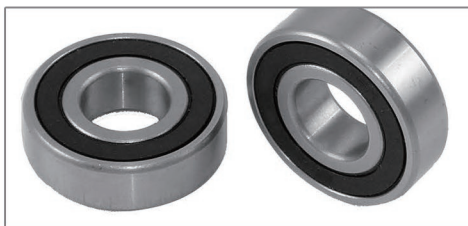
Durastar Manufacturing



• Anti-slip curved handle



• Two crowned tread flat free wheels



• With heavy duty precision ball bearings

## AP52-FT

The hand truck is lightweight, strong and durable. Large nose plate can accept heavy loads easily. This hand truck can be maneuvered easily with the loop handle. It steers smoothly on 10" x 3" crowned tread flat-free Wheels with heavy duty precision bearings.

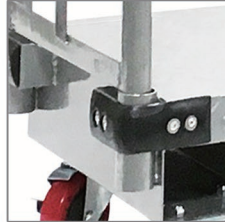
- ▶ Anti-Slip Curved Handle
- ▶ **4 Rail Frames** for reinforcement and durability
- ▶ Two 10 x 3" Crowned Tread Flat Free Wheels with **Heavy Duty Precision Ball Bearings**
- ▶ **2 Year Limited Warranty**

Height	▶ 52"
Nose Plate	7.5" x 18"
Weight	▶ 18.5 lbs.
Capacity	500 lbs.
Wheel Type	▶ Flat-Free Wheel
Warranty	2 Year Limited Warranty



# U-BOAT PLATFORM TRUCK

Durastar Manufacturing



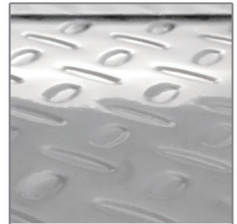
• With corner bumpers



• 2 Duratough 8" polyurethane wheels



• Four swivel 4" casters



• Anti-skid diamond plate

## UC1648 UC1660

The U-Boat platform trucks maneuver easily in narrow aisles, confined spaces and hallways.

- ▶ All-welded Construction for Strength
- ▶ Removable Handles for Oversized Loads
- ▶ Steel Deck with Anti-Slip Diamond Plate
- ▶ Corner Bumpers Prevent Scuffing on Walls
- ▶ 2 Rigid 8" Duratough Polyurethane Casters
- ▶ 4 Swivel 4" Polyurethane Casters

Deck Size	▶ 16" x 48" UC1648   16" x 60" UC1660
Capacity	1000 lbs. UC1648   1800 lbs. UC1660





## **Everest Casters and Wheels**

17815 Foster Rd, Suite 146  
Liberty, MO 64068, USA

866-532-1698  
[Info@DurastarCasters.com](mailto:Info@DurastarCasters.com)  
[www.DurastarCasters.com](http://www.DurastarCasters.com)

